

L&L SKIN

KIRA



24K GOLD RF FACIAL DEVICE

USER MANUAL & WARRANTY INFORMATION

L&L SKIN

24K Gold RF Facial Device

Model: Kira

Japan L&L Skin Tech Co., Ltd.

Address: 3F Kabutocho Daiichi Heiwa Building 5-1
Nihonbashi Kabuto-cho Chuo-ku,
Tokyo, Japan 103-0026

www.lskinshop.eu

Designed by L&L SKIN in Japan



Introduction

Thank you for purchasing your new RF Beauty device. This product uses advanced radio frequency technology to target the epidermis, dermis, and muscle layers of the skin for multi-dimensional anti-aging properties, quicker heating, and richer effects! Upgrade the three-band conversion radio frequency to activate collagen at multiple levels, making the skin plumper with improved elasticity. Smooth out wrinkles and work to reverse the four major effects of aging: loose, sagging, wrinkled and dull skin.

This product also uses dual ion penetration and purification processes that combine advanced ion and EMS technology with micro-vibration massage to deeply purify the skin, improve nutrient absorption from skin care products, and lift and firm. Achieve better skin care results from the inside out to keep your skin looking healthy, supple, and radiant at all times.

Important

Read this user manual carefully prior to using the product and keep it for future reference.

Danger

- Make sure the charger and USB cable stay dry. Never immerse the product in water.
- Do not charge the product in the vicinity of water (e.g., near a filled bathtub, running shower or swimming pool).
- Never expose the product to fire.

Warning

- Only use the product in combination with the supplied USB cable when charging.
- Do not use the product, attachment or USB cable if damaged or broken to avoid injuries.
- If the USB cable is damaged, always replace with the same type to avoid any hazards.
- Fully charge the product at least once every 2 months to maintain battery life.
- This product is not intended for use by persons younger than 12 years and those with reduced physical, sensory or mental capabilities or a lack of experience and knowledge unless they have been supervised or instructed concerning product use by a person responsible for their safety.
- Women who are pregnant or lactating should not use this product.

Important

Caution

- Do not use this product for any purpose other than those described in the manual.
- Charge, use and store the product at a temperature between 5°C/40°F and 35°C/95°F.
- Do not use this product if you are taking steroid-based medication.
- Do not use this product if your skin is still recovering from a cosmetic procedure such as a chemical or mechanical peel, laser resurfacing, fractional laser treatment, mesotherapy treatment or any dermal filler treatment within the past two weeks.

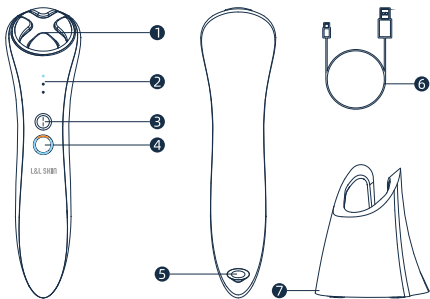
General

- Regular product cleaning ensures optimal results and a longer product life.
- Do not use this product when sleeping or drowsy.

Contraindications and other warnings

- Do not apply this product directly to your ear, which may cause temporary hearing loss.
- Do not use this product if you suffer from any ear conditions (swimmers ear, ear infection etc.).
- Do not use this product on chapped skin, open wounds, or if you suffer from skin diseases or irritations such as severe acne, sunburn, skin infection etc.
- Do not use this product if you have a pacemaker, implanted medical device or metal prosthesis.
- Do not use this product on sensitive skin around the eyes, which is thin and delicate.
- Do not use this product on any mucosal area (e.g., inside the nose, mouth and genital area) as this may cause local irritation.

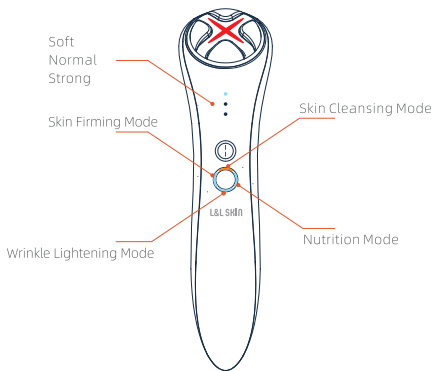
Product Mix



- ① Massage Probe
- ② Gear Indicator/Charging Indicator
- ③ Gear Switch Button
- ④ Power Button, Mode Switch Button, Mode Indicator
- ⑤ Charging Socket
- ⑥ USB Cable
- ⑦ Base

Function Guide

1. This product consists of four modes: skin cleansing, nutrition, wrinkle lightening, and skin firming.
2. After pressing the power button to turn on the product, use the mode switch button to select one of four modes.
3. After the product is turned on, you can switch modes using the gear switch button.
4. Press and hold the power button to power off.




*Auto shut-off function: The product will shut off automatically after 4 minutes of continuous use.

Function Guide

Skin Cleansing Mode

1. In this mode, the continuous frequency conversion vibration and positive ions generated by the product purify deep pores, shrink pores, lighten spots and acne, brighten dull skin and work to remove blemishes. The specific blue light wavelength can fight acne and purify the skin, shrink pores, repair sensitive skin and balance oily skin.

2. How to use

Step 1: Press and hold the power button to turn the product on and then select  to activate "skin cleansing" mode.

Step 2: After applying the nourishing cream, massage the facial skin in circular motions using the probe (as shown in the picture).




Function Guide

Nutrition Mode

1. In this mode, the continuous frequency conversion vibration and negative ions generated by the product help the skin absorb nutrients such as vitamin C and minerals. It is therefore recommended you use the device with skin care products such as lotion containing vitamin C, vitamin A or vitamin E for optimal results.

2. How to use

Step 1: Press and hold the power button to turn the product on and then select  to activate "nutrition" mode.

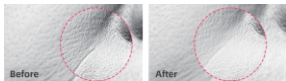
Step 2: After applying the nutritional cream or mask, massage the facial skin in circular motions using the probe (as shown in the picture).



Function Guide

Radio frequency Mode

1. In this mode, the radio frequency beauty product emits radio waves into the subcutaneous tissue so that the natural resistance movement of subcutaneous tissue generates heat energy: based on the principle that collagen fibers in the dermis immediately shrink at 55-70°C, thus tightening the skin and promoting collagen regeneration. Dual-impact action means that while collagen produces immediate contractions, it also stimulates the dermis to secrete additional collagen fibers for regeneration purposes: further supporting the skin, increasing dermis thickness and density, minimizing wrinkles and improving relaxation.




The LED red light power adopts a specific wavelength that can improve blood and lymphatic system microcirculation, stimulate cell mitochondria activity, convert light energy into cell energy, neutralize free genes generated in the cells, stimulate fibroblasts to produce collagen, activate the skin to speed up blood circulation and improve wrinkles and emollients from within the skin.

The continuous frequency conversion vibration generated by the product massages the skin, improves fine lines, firms the skin and works effectively to prevent wrinkles and sagging skin.

Warning: Radio waves generated by the radio frequency will continue to heat the dermis layer of the skin. Please continue to move the massage while the massage probe is attached to the skin. Do not stay in the same area of the skin to avoid burns.

2. How to use

Step 1: Press and hold the power button to turn it on, and then select  to activate the radio frequency mode.

Step 2: After applying the water based serum, touch the skin with the massage probe as shown in the picture and move it upwards to massage.




EMS Mode

1. In this mode, the product sends out EMS micro-currents to rejuvenate facial muscles and motor nerves while promoting more effective facial skin contraction: fostering local blood circulation, activating cells, reducing skin puffiness and lifting and firming the skin.

LED red light power adopts a specific wavelength that can improve microcirculation within the skin's blood and lymphatic systems, stimulating cell mitochondria activity, converting light energy into cell energy, neutralizing free genes generated in the cells, stimulating fibroblasts to produce collagen, activating the skin to speed up blood circulation and improving wrinkles and emollients from within the skin.

The continuous frequency conversion vibration generated by the product massages and firm the skin, improves fine lines and works effectively to prevent wrinkles and sagging skin.

2. How to use

Step 1: Press and hold the power button to turn it on, selecting  to activate skin firming mode.

Step 2: After applying water based serum, massage the skin with the probe in an upward fashion (as shown in the picture).



Charging Instructions

1. Connect with computer: Turn on the computer, connect the USB charging cable to the computer charging socket, and connect the "Type-C" end of the charging cable to the product socket to begin charging.
2. Charge with adapter: Connect the USB charging cable to the adapter socket, and then connect the "Type-C" end of the charging cable to the product socket to begin charging.

Adapter specifications: 5V = 1A

3. The indicator flashes while charging, remaining lit when fully charged.



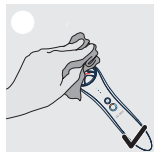
CAUTION: Prior to charging, ensure the charging socket is dry and free of water and skin care products. Never charge the product near water. Please do not use the product while charging, and charging time should not exceed 24 hours. Fully charge the product at least every 2 months to preserve battery life and use only the charging accessories provided with the product.

Product Maintenance

The following maintenance instructions are important to ensure proper product functioning. If users do not adhere to these instructions, your device may provide less-than-ideal treatment or stop working altogether.

Before beginning the cleaning process, ensure your product is powered off.

- When cleaning the product, use only a dry cloth; never use steel wool, abrasive cleaners or corrosive liquids such as alcohol or acetone.
- Thoroughly clean the product and probe after each use to ensure optimal performance.
- Never rinse your product under the faucet or immerse it in water.
- Make sure all parts are dry before reconnecting to the charging cable.



Warranty terms and conditions

1-YEAR LIMITED WARRANTY

This product is protected for a period of ONE (1) YEAR after the original date of purchase against defects due to faulty workmanship or materials. If you discover a defect and notify us during the warranty period, we will (per our discretion) fix the product free of charge.

The warranty covers working parts that affect product function. It does NOT cover purely cosmetic deterioration caused by normal wear and tear or damage caused by an accident, misuse or neglect. Any attempt to open or disassemble the product (or its accessories) will void the warranty.

For any warranty claim, reasonable evidence must be provided that the claim date is within the warranty period. For this reason, please keep your original purchase receipt for the duration of the warranty period.

Environmental Considerations

Do not discard this product in the trash at the end of its useful life. Instead, recycle it to help protect the environment.



This product must be sent to an official designated recycling center.

Specifications

MATERIALS: ABS Plastic/Zinc Alloy/Stainless Steel

SIZE: 181 x 46.5 x 40.2mm (handle), 80 x 67.5 x 76.5mm (base)

WEIGHT: ~250g (handle), ~130g (base)

BATTERY: Li-ion 900 mAh 3.7V

CHARGING TIME: About 3 hours

Estimated usage time on a full charge:

1. Radio frequency mode: about 40 minutes (depending on skin resistance)
2. All other modes: about 300 minutes

STANDBY: About 60 days

Disclaimer

Product users do so at their own risk. Neither the company nor retailers assume any responsibility or liability for injuries or damages (physical or otherwise) resulting from direct or indirect product use. We reserve the right to revise this manual and make occasional changes to the contents thereof without an obligation to notify any person of the same.

Please contact us to receive more comprehensive information including user guide updates, customer comments, frequently asked questions, etc.